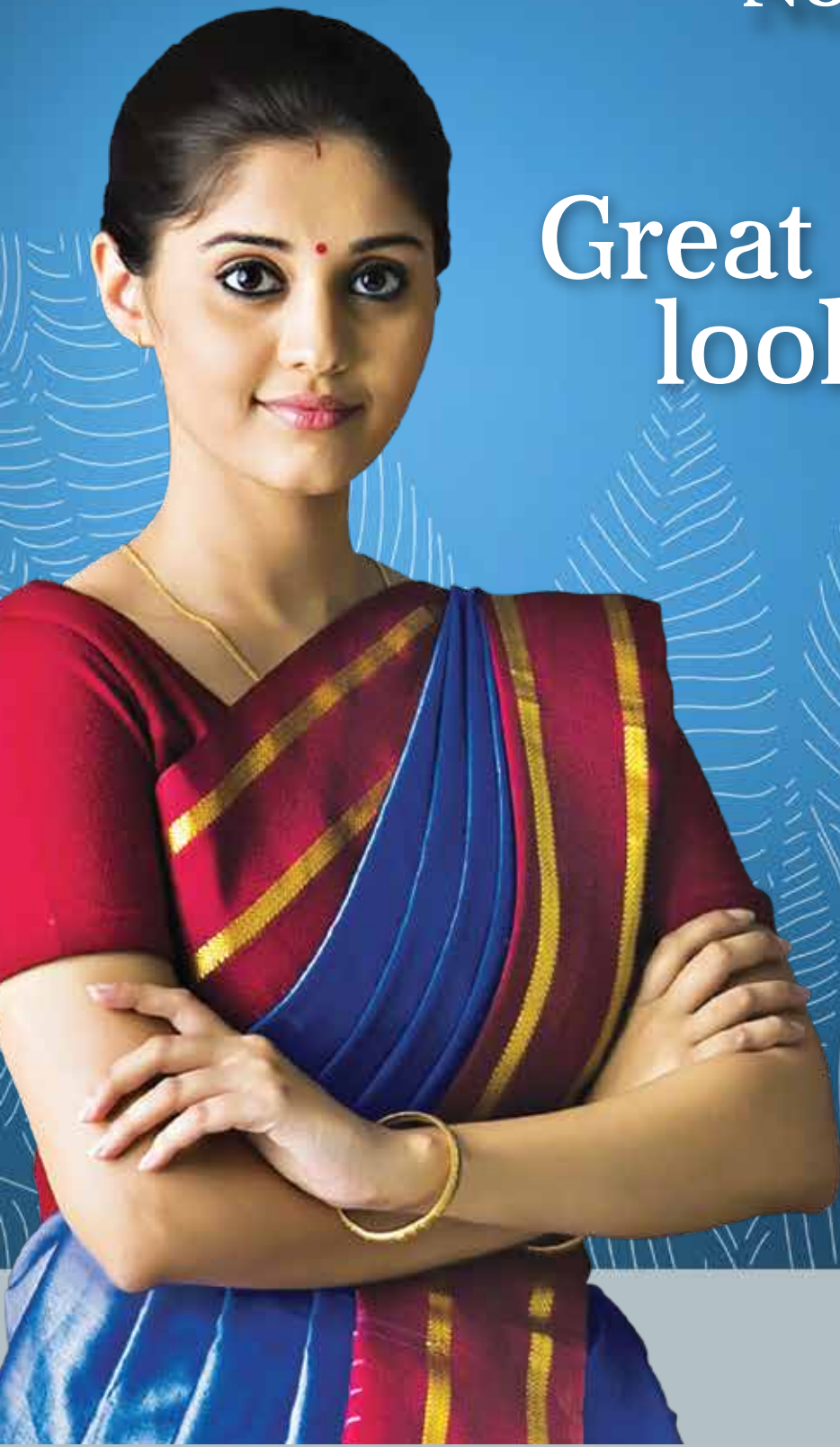


Higher Coverage!

Super Finish!

No Cracks!

Great  
looking walls!



**RAMCO**  
**SUPER**  
**PLASTER**

NON-REFRACTORY PLASTER &  
BRICK MORTAR CONCENTRATE

## FEATURES & BENEFITS

- M-sand Compatibility
- Higher Productivity
- Lesser Rebound Loss
- Greater Workability



## Technical Specifications\*

Air Content (%)	7.8
Water Retentivity (%)	80
Pull-out Strength 7 days (N/mm <sup>2</sup> )	0.8
Pull-out Strength 28 days (N/mm <sup>2</sup> )	1.2
Flow as per Flow Table test (mm)	210
Bulk Density (g/litre)	900

\*Indicative values for 1 : 3 by volume under laboratory condition

Not to be used for any structural  
and load bearing applications

# RAMCO CEMENT

